

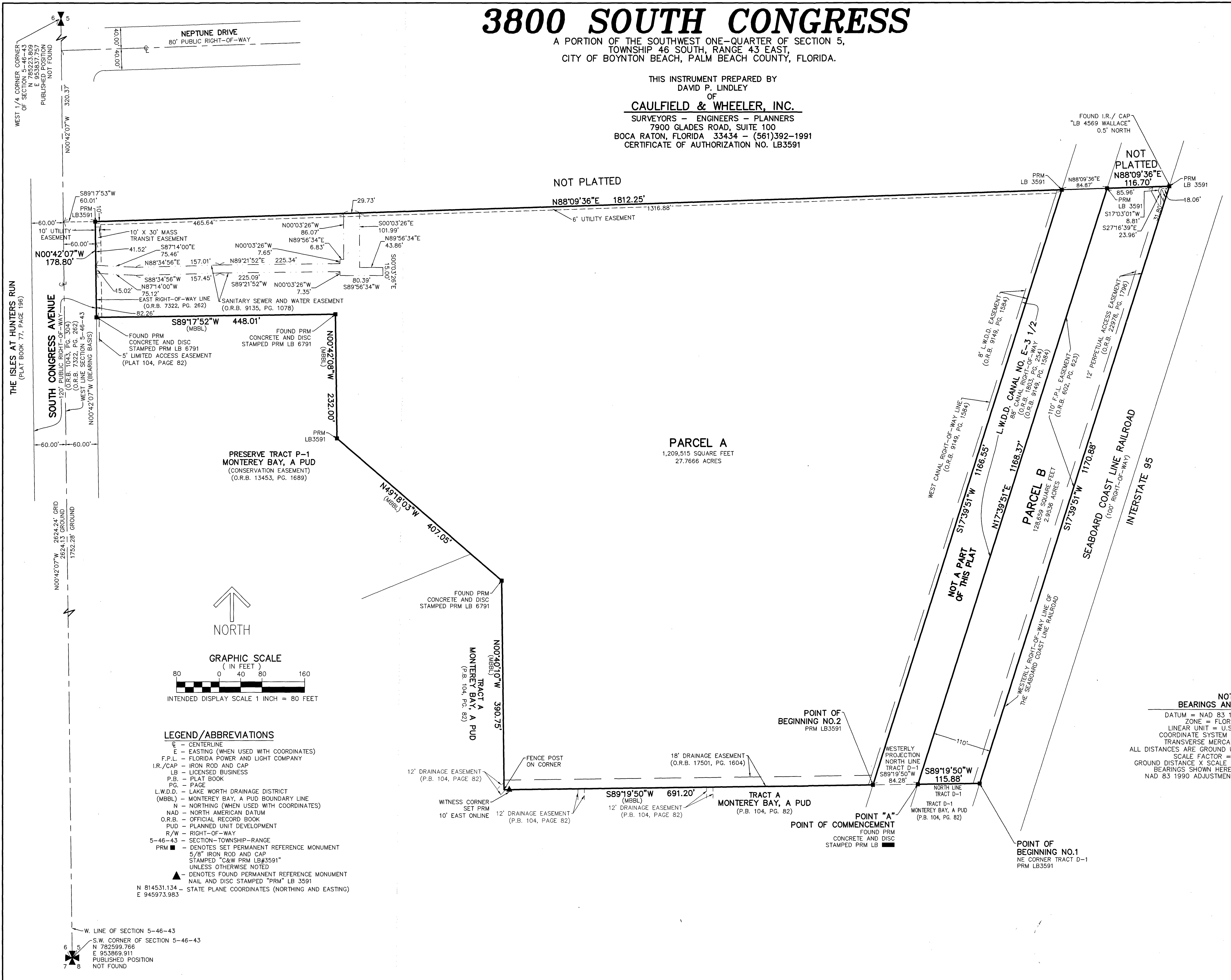
3800 SOUTH CONGRESS

A PORTION OF THE SOUTHWEST ONE-QUARTER OF SECTION 5,
TOWNSHIP 46 SOUTH, RANGE 43 EAST,
CITY OF BOYNTON BEACH, PALM BEACH COUNTY, FLORIDA.

THIS INSTRUMENT PREPARED BY
DAVID P. LINDLEY
OF
CAULFIELD & WHEELER, INC.
SURVEYORS - ENGINEERS - PLANNERS
7900 GLADES ROAD, SUITE 100
BOCA RATON, FLORIDA 33434 - (561)392-1991
CERTIFICATE OF AUTHORIZATION NO. LB3591

14

SHEET 2 OF 2



- LEGEND/ABBREVIATIONS**
- ⊕ - CENTERLINE
 - E - EASTING (WHEN USED WITH COORDINATES)
 - F.P.L. - FLORIDA POWER AND LIGHT COMPANY
 - I.R./CAP - IRON ROD AND CAP
 - LB - LICENSED BUSINESS
 - P.B. - PLAT BOOK
 - P.C. - PAGE
 - L.W.D.D. - LAKE WORTH DRAINAGE DISTRICT
 - (MBBL) - MONTEREY BAY, A PUD BOUNDARY LINE
 - N - NORTHING (WHEN USED WITH COORDINATES)
 - NAD - NORTH AMERICAN DATUM
 - O.R.B. - OFFICIAL RECORD BOOK
 - PUD - PLANNED UNIT DEVELOPMENT
 - R/W - RIGHT-OF-WAY
 - 5-46-43 - SECTION-TOWNSHIP-RANGE
 - PRM ■ - DENOTES SET PERMANENT REFERENCE MONUMENT
 - 5/8" IRON ROD AND CAP STAMPED "C&W PRM LB#3591" UNLESS OTHERWISE NOTED
 - ▲ - DENOTES FOUND PERMANENT REFERENCE MONUMENT NAIL AND DISC STAMPED "PRM" LB 3591
 - N 814531.134 E 945973.983 - STATE PLANE COORDINATES (NORTHING AND EASTING)

NOTES
BEARINGS AND DISTANCES

DATUM = NAD 83 1990 ADJUSTMENT
ZONE = FLORIDA EAST
LINEAR UNIT = U.S. SURVEY FOOT
COORDINATE SYSTEM 1983 STATE PLANE
TRANSVERSE MERCATOR PROJECTION
ALL DISTANCES ARE GROUND UNLESS OTHERWISE NOTED
SCALE FACTOR = 1.00004278
GROUND DISTANCE X SCALE FACTOR = GRID DISTANCE
BEARINGS SHOWN HEREON ARE GRID DATUM
NAD 83 1990 ADJUSTMENT, FLORIDA EAST ZONE.

W. LINE OF SECTION 5-46-43
S.W. CORNER OF SECTION 5-46-43
N 782599.766
E 953869.911
PUBLISHED POSITION
NOT FOUND